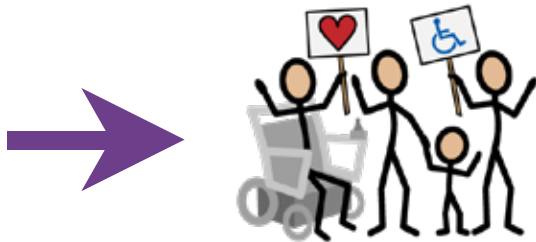


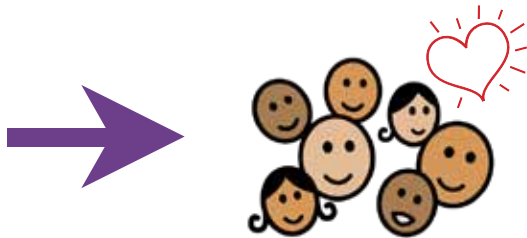
WHAT ARE YOU INVESTING IN?



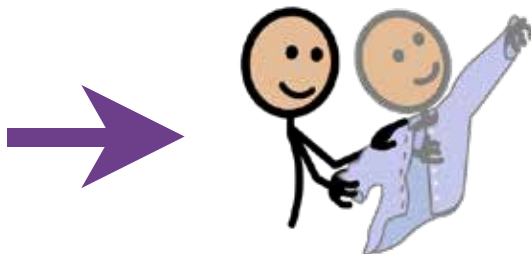
There are four massively under utilised resources in most organisations



The passion and capacities of people with disabilities;



The concerns and assets of families;



The talents and connections of direct support workers; and



The assets in communities outside the borders of the human services.

John O'Brien

What resources are you under utilising?
Who could you be investing more in, and how?
What could you be investing more in, and how?

What are some actions you could take to utilise more of the resources around you?

